

Contents

1. General PR13700 location and targets.....	1
2. Historical summary	2
3. Expenditure overview from operation commencement to actual	3
4. Investment estimation cost.....	3
4.1. Administration fees.....	3
4.2. Mining fees estimation.....	3
5. Energy	4
6. Mineral production.....	5
7. Attachment documents.....	a
7.1. Mining engines	a
7.2. Production machines	b
7.3. Coltan concentration flow sheet	c

List of figures

Figure 1: geographic location of the SAMIKIVU Sarl licence PR13700 in Flexi cadastre map.....	1
Figure 2: 13700PR main targets; Nahelke, Kasirimu and Kazungu	2
Figure 3: Expenditures chart from operational commencement to actual	Erreur ! Signet non défini.

List of table

Table 1: Expenditures from operational commencement to actual	Erreur ! Signet non défini.
Table 2: Administration fees	3
Table 3: Exploitation engine and start activities coct.....	3
Table 4: Equipment for mineral treatment	4
Table 5: New machine installation.....	4

List of plate

Plate 1: The iTSCi team tagging the artisanal mining production	2
Plate 2: Hydolic excavator	a

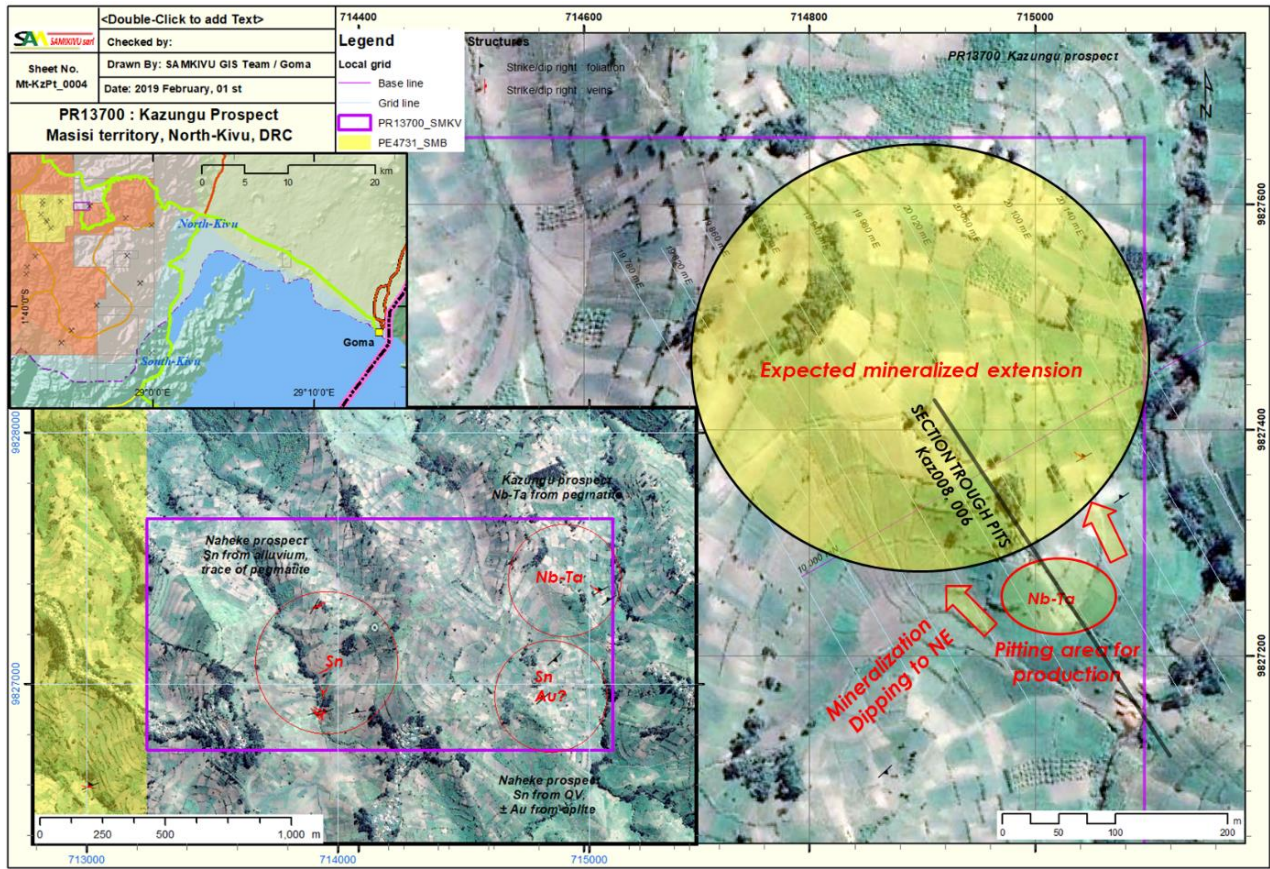


Figure 2: 13700PR main targets; Nahelke, Kasirimu and Kazungu

2. Historical summary



Plate 1: The iTSCi team tagging the artisanal mining production

The artisanal activities are in progress with tagging mineral pack regarding the joint initiative of governmental authorities, companies and civil society organizations. Artisanal pits are extended over ten meters with shallow depth of pegmatite (10 m). This shows a large extension of mineralized zone.

6. Mineral production

Regarding the artisanal mining production; using industrial technics with the machines, production will be considerably increased. Based on actual geological extension of the mineralized zone and potential target, the production will pass from thousands to many tens thousands per month.

The recovery percentage of mineral production will increase from 30 (artisanal technics) up to 70 to 80 using the industrial techniques.

In the first time, the company project to produce at **least 25 to 30 tons** of concentrated coltan mineral.

7. Attachment documents

7.1. Mining engines

Below the engines for pegmatite material extraction and mining stability as well as for mining roads



Tractafrique Equipment International

PELLE HYDRAULIQUE CATERPILLAR MODELE 330D2L
Poids en ordre de marche 30.300 kg


- ✓ Cabine climatisée avec pare-brise avant en 2 parties
- ✓ Moteur CAT ACERT C7.1 / 159 kW 213 Ch
- ✓ Flèche monobloc 5.55 m - Mass Excavation
- ✓ Balancier 2.5m - Mass Excavation
- ✓ Timonerie DB
- ✓ Lignes HP
- ✓ Godet SD 1.66m³ / 1350mm avec dents K100 Pénétration
- ✓ Tuiles 600mm Triple Arête
- ✓ Protections de tourelle partie basse, moteur de translation et moteurs de rotation
- ✓ Système de refroidissement renforcé
- ✓ Préfiltre à Air
- ✓ Eclairage de travail
- ✓ Product Link PL631 (SAT)

Source = Xuzhou – Chine



Plate 2: Hydolic excavator

This below, the bulldozer, used to earthwork regarding the preliminary works like the road tracing for orebody access and mining moves



Tractafrique Equipment International

TRACTEUR SUR CHAINES CATERPILLAR MODELE D8R
Poids en ordre de marche 38.000 kg

- ✓ Cabine ROPS/FOPS climatisée
- ✓ Moteur CAT 3406C, puissance 247 kW / 335 Ch
- ✓ Direction différentielle
- ✓ Transmission Powershift, 3 rapports avant et 3 rapports arrière
- ✓ Lame 85U avec tilt hydraulique 8,7 m³
- ✓ Hydraulique ripper
- ✓ Ripper Mono dent
- ✓ Train de roulement suspendu
- ✓ Tuiles 610mm ES PPR, 44 sections
- ✓ Portes compartiment moteur perforées
- ✓ Préfiltre à Air
- ✓ Eclairage de travail
- ✓ Product Link PL631 (SAT)




Plate 3: Bulldozer for mining stability and roads

7.2. Production machines

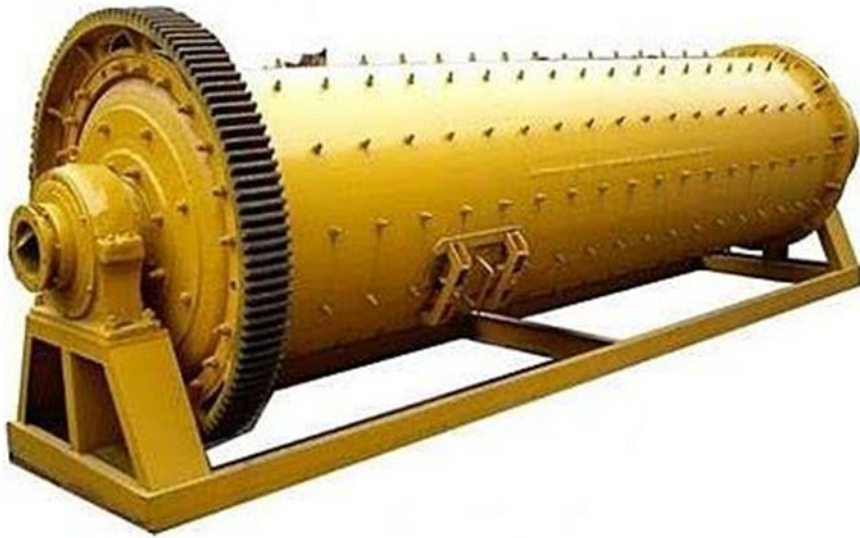


Plate 4: Ball Mill Crusher

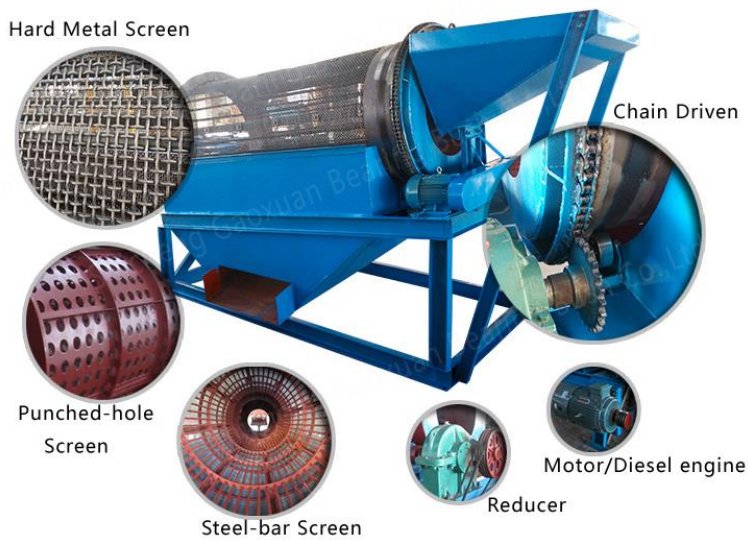


Plate 5: Fixed type of trommel

A small professional rotary rock trommel screen will be used for washing pegmatite (up to 10 tons of material per hour). The recovery percentage of mineral production is estimated 70 to 80 using the trommel when it is about 30.